

Safe and Smart



Large loop for opening or hanging.

Adhesive area on back for hanging up the package.

Sterile water. A light press on the water-pocket makes the water run down and activate the catheter's surface layer.

Insertion guide. A firm grip without needing to touch the catheter with your fingers.



Catheter tube with Urotonic[™] Surface Technology. Gives the lowest friction during insertion and withdrawal.



Foldable and discreet

Intended Use

- Hydrophilic single use catheter for every-day use or for health care use
- Intermittent catheterisation
- Bladder emptying

Sterilisation & Shelf Life

All catheters are sterilised by irradiation. Information about the recommended best-before date is printed on the package.

Package

Individual "peel-open" packaging
30 catheters per carton
4 cartons per shipping box

Material Composition

Hydrophilic surface coating: Polyvinyl pyrrolidone (PVP) and table salt (NaCl)

Catheter: Medical grade polyvinyl chloride (PVC)

Water pocket: Laminate foil of polyethylene terephthalate (PET), polyethylene (PE) and aluminium, sterile water

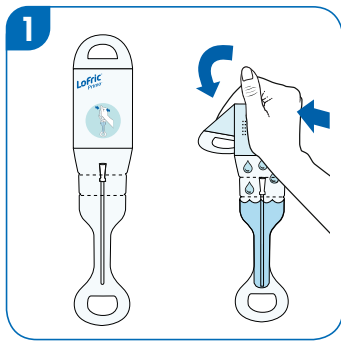
Plastic packaging: Polyethylene (PE)

Product Range

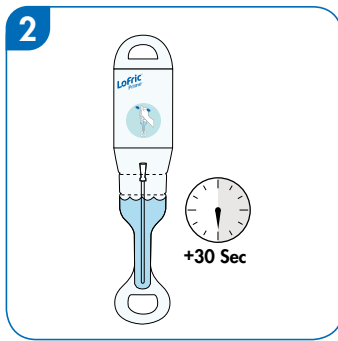
| Reference | Type | Length | Size |
|-----------|---|--------|-------|
| 960 08 00 | LoFric [®] Primo [™] Male | 40 cm | CH 08 |
| 960 10 00 | LoFric [®] Primo [™] Male | 40 cm | CH 10 |
| 960 12 00 | LoFric [®] Primo [™] Male | 40 cm | CH 12 |
| 960 14 00 | LoFric [®] Primo [™] Male | 40 cm | CH 14 |
| 960 16 00 | LoFric [®] Primo [™] Male | 40 cm | CH 16 |
| 960 18 00 | LoFric [®] Primo [™] Male | 40 cm | CH 18 |
| 962 06 00 | LoFric [®] Primo [™] Paediatric | 20 cm | CH 06 |
| 962 08 00 | LoFric [®] Primo [™] Paediatric | 20 cm | CH 08 |
| 962 10 00 | LoFric [®] Primo [™] Paediatric | 20 cm | CH 10 |
| 964 08 00 | LoFric [®] Primo [™] Female | 20 cm | CH 08 |
| 964 10 00 | LoFric [®] Primo [™] Female | 20 cm | CH 10 |
| 964 12 00 | LoFric [®] Primo [™] Female | 20 cm | CH 12 |
| 964 14 00 | LoFric [®] Primo [™] Female | 20 cm | CH 14 |
| 964 16 00 | LoFric [®] Primo [™] Female | 20 cm | CH 16 |
| 964 18 00 | LoFric [®] Primo [™] Female | 20 cm | CH 18 |
| 968 08 00 | LoFric [®] Primo [™] Female | 15 cm | CH 08 |
| 968 10 00 | LoFric [®] Primo [™] Female | 15 cm | CH 10 |
| 968 12 00 | LoFric [®] Primo [™] Female | 15 cm | CH 12 |
| 968 14 00 | LoFric [®] Primo [™] Female | 15 cm | CH 14 |
| 966 10 00 | LoFric [®] Primo [™] Tiemann | 40 cm | CH 10 |
| 966 12 00 | LoFric [®] Primo [™] Tiemann | 40 cm | CH 12 |
| 966 14 00 | LoFric [®] Primo [™] Tiemann | 40 cm | CH 14 |
| 966 16 00 | LoFric [®] Primo [™] Tiemann | 40 cm | CH 16 |
| 966 18 00 | LoFric [®] Primo [™] Tiemann | 40 cm | CH 18 |

Instructions

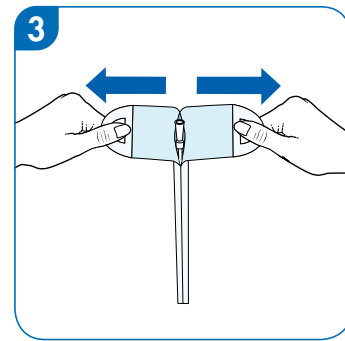
Opening 1 (Sterile opening)



1. *Unfold the package. Hold the product upright. Fold and press the waterpocket so the water flows down to the catheter.*

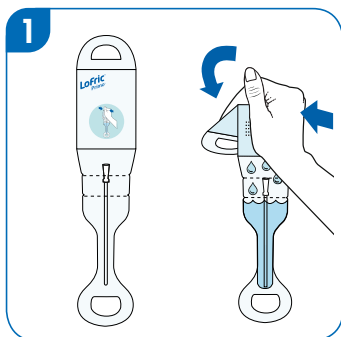


2. *Hang LoFric Primo using the upper loops or the adhesiv area. Let it soak for 30 seconds while you prepare for insertion.*

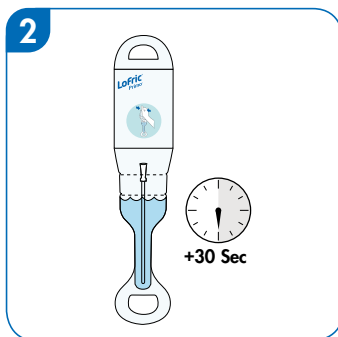


3. *Peel open packaging. Grip the package at the loops above the water pocket with both hands. Peel until the connector is exposed. Catheterise.*

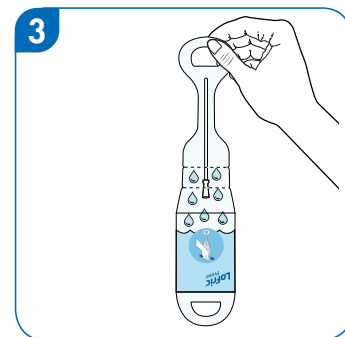
Opening 2 (Using the insertion guide)



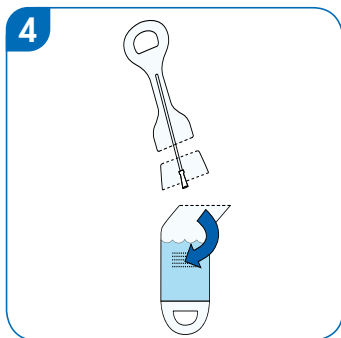
1. *Unfold the package. Hold the product upright. Fold and press the waterpocket so the water flows down to the catheter.*



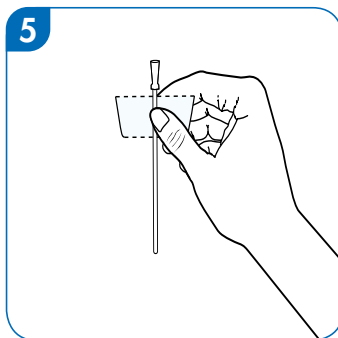
2. *Hang LoFric Primo using the upper loops or the adhesiv area. Let it soak for 30 seconds while you prepare for insertion.*



3. *Turn the package upside down so the water flows back into pocket.*



4. *Remove the water pocket by tearing at indentation "A". Hint! Tear half-way first, turn the package and tear the other half. Tear at indentation "B", in the same manner as for indentation "A".*



5. *Use the remaining packaging part as an insertion guide. This part will give you a firm and hygienic grip, allowing you to insert the catheter without touching it.*